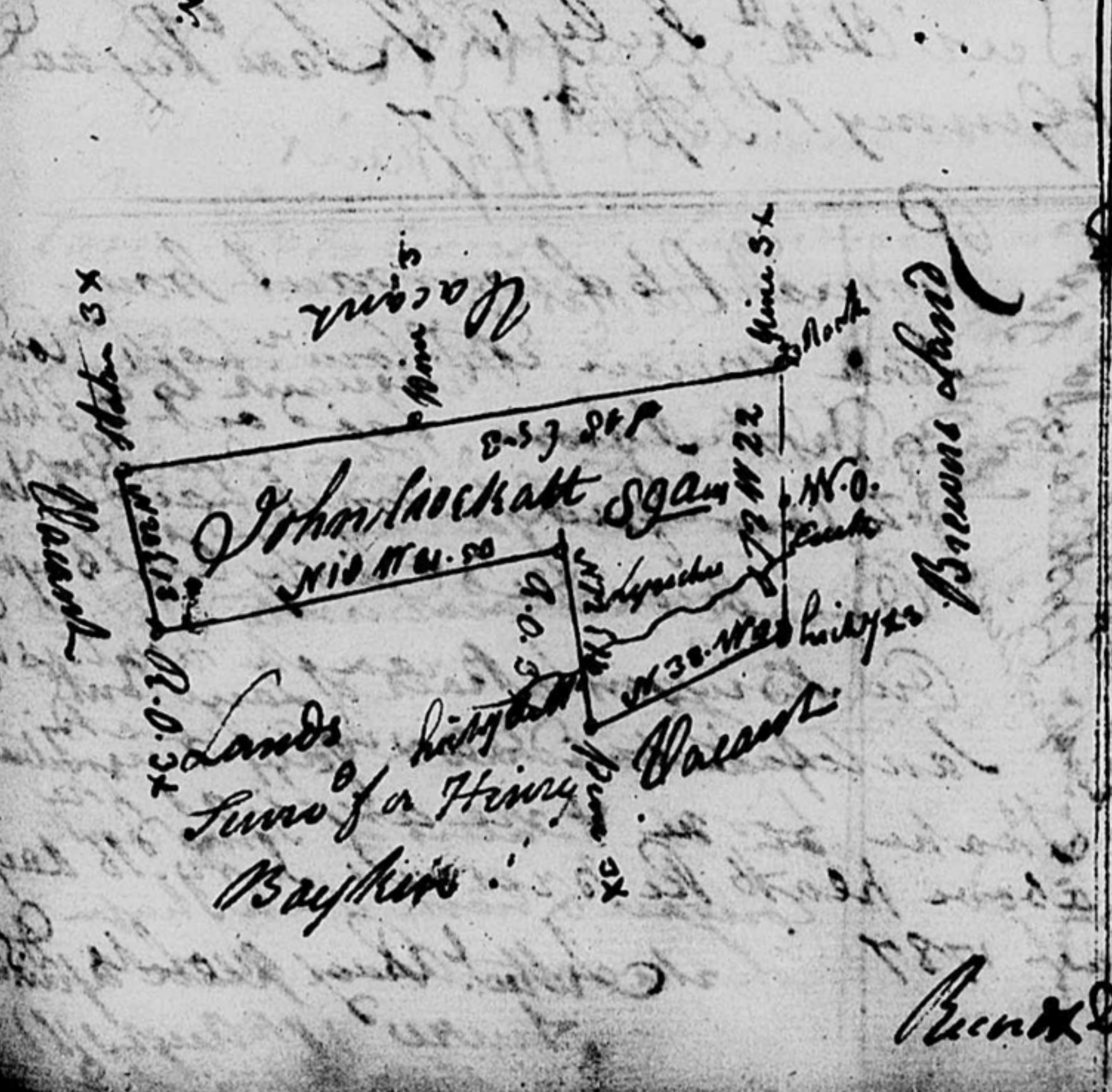


St Carolina  
 Pursuant to warrant from John Winn Esq Com'r Locatn  
 for Land Dis I have laid out  
 unto John Bayson a tract of Land  
 containing Eight hundred Acres  
 situated on the Creek waters of  
 the Long and hath such  
 Shape and Marks as the above  
 Plat represents  
 Survey'd 16<sup>th</sup> Aug 1797  
 Record'd this 25 Aug  
 Henry Smith D.



St Carolina  
 Pursuant to warrant from John Winn Esq Com'r Locatn  
 for Land Dis I have laid out  
 unto David Cahins a tract of Land  
 containing Six hundred Acres situated  
 on Jack Lovers Branch waters of  
 Broad River and hath such Shape  
 Marks Buttings and Boundings  
 as the Above Plat represents  
 Survey'd 20<sup>th</sup> Aug 1797  
 Wm Gastons D.S.  
 Record'd this 27 Aug.



St Carolina  
 Pursuant to warrant from John Winn Esq Com'r Locatn  
 I have laid out unto John Lockhart  
 a tract of Land containing Eight  
 hundred Acres situated on both sides  
 Lynches Creek and hath such Shape  
 and Marks as the Above Plat represents  
 Survey'd 28 Aug 1797  
 Record'd this 28 Aug 1797  
 Wm Gastons D.S.



# Welcome to Tract Plotter!

S56.5.33E 91.58  
N23E 36.5c  
S53E 12c  
N23E 62.5c  
N53W 79.5c  
S37W 101c

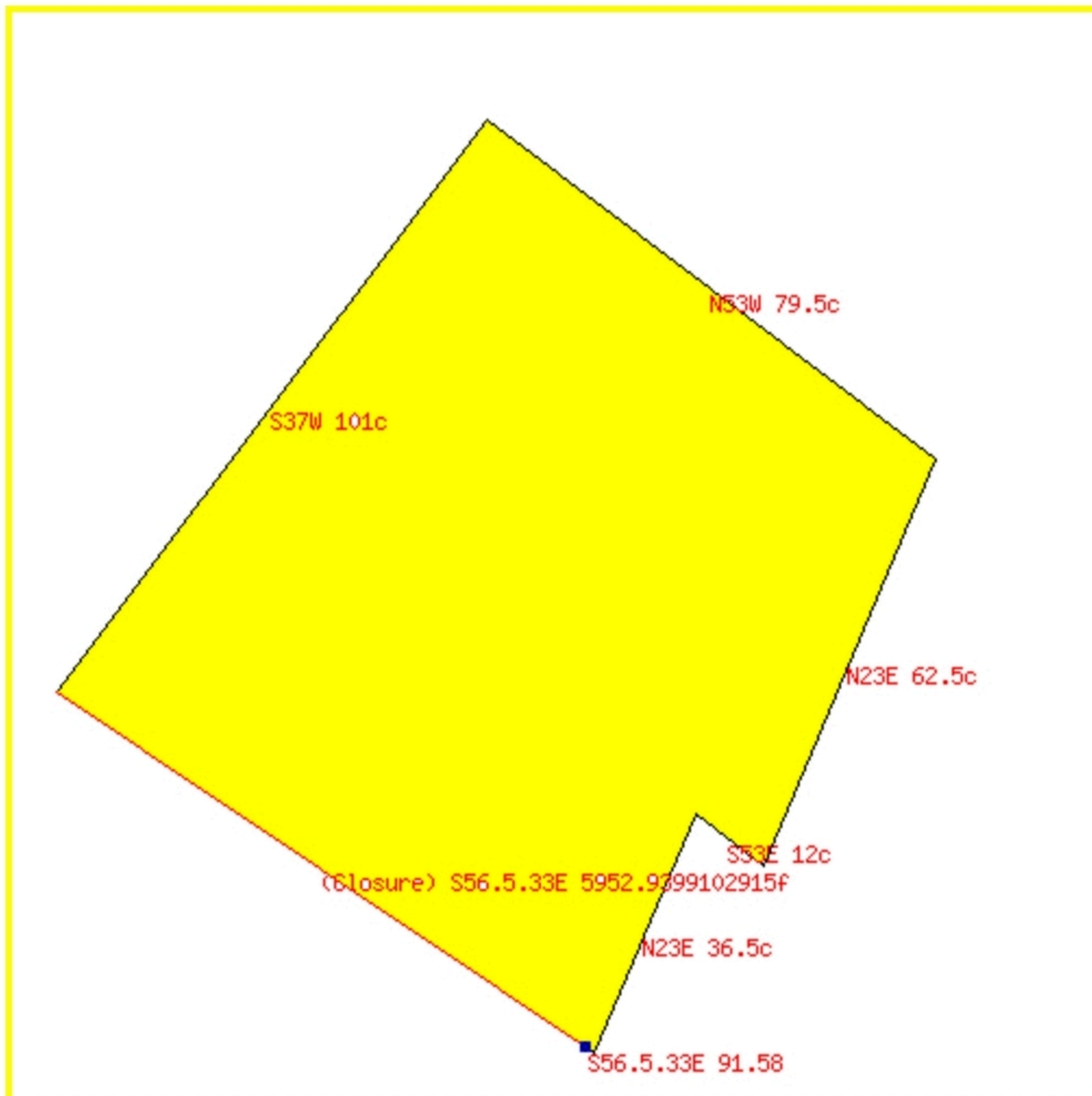
[Enlarge This Box](#)

Show Labels? ☐ Show Full Precision? ☐

37409157.832344 square feet

858.79609348817 acres (+/- 264.470158 acres) Perimeter: 19330.58 feet

Closure: S56.5.33E 5952.939910f (30.795454198951% or 1:3 perimeter error)



We will be releasing a more fully-featured version of Tract Plotter at some point in the future. To sign up to be notified by e-mail when the new version is available, please input your e-mail address here. Your e-mail address will never be sold or used for spam.