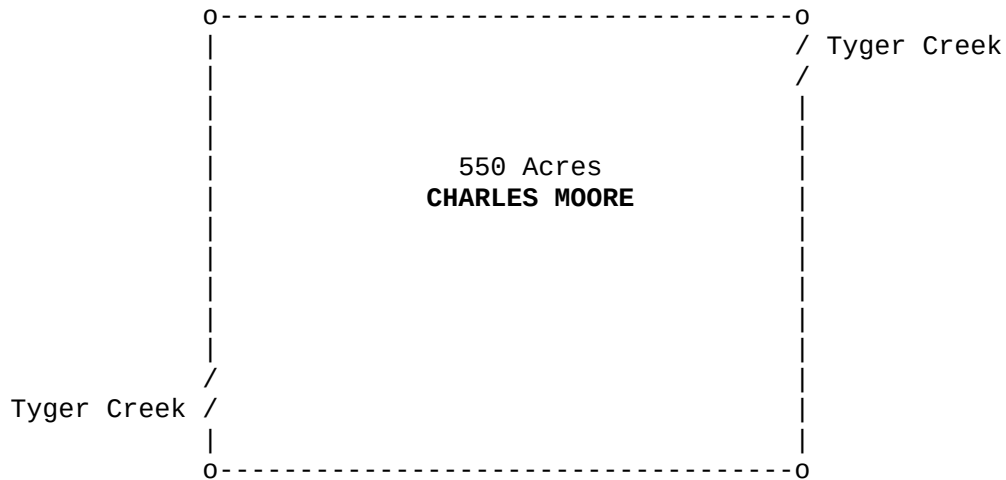


Deed, SC, Berkley, Charles Moore, 1763



South Carolina

Pursuant to a precept from the Hon. **EGERTON LEIGH**, Esq., Surveyor General of this province, bearing date the First of February 1763, I have admeasured and laid out unto **CHARLES MOORE** 550 acres of land in Berkley County on the Tyger [Tiger] Creek, formerly called **LAWSON**'s Creek, contains as is above described and hath such marks, form and shape as the above plat represents and was land granted to **ROGER LAWSON** by the Gov. of North Carolina and was conveyed by said **LAWSON** to him.

Certified this 10th day of February 1763

ISAAC PERRY, D. S.

Deed, SC, Berkley, Charles Moore, 1763

```
##### # # ##### ##### # # ##### ##### # #  
# # ## ## # # ## # # # # # # ## ##  
# # # # # # # # # # # # # # # # # # #  
##### # # # # ##### ##### # # # # # # # #  
# # # # # # # # # # # # # # # # # # #  
# # # # # # # # # # # # # # # # # # #  
##### # # ##### ##### # # ### ##### ##### # #
```

Transcribed from original documents by Brent R. Brian & Martha M. Brian.

This document and others can be found on our website:

[BMGEN](#)

We claim **COPYLEFT** on the documents that we publish that are our original work.

COPYLEFT "rules" can be reviewed on the web site:

[GNU Free Documentation License](#)

In short, use what you like. But if you use our stuff, mention us as the source.

Brent R. Brian
Martha M. Brian
BrianMitchellGenealogy@gmail.com