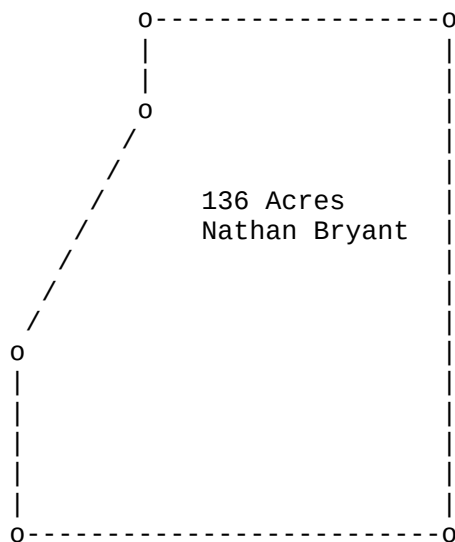


Deed, SC, Abbeville, Nathan Bryant, 1787



South Carolina

NATHAN BRYANT

136 Acres of land Situate above the ancient boundary line on Big Creek, a branch of Saluda River, surveyed by **JONATHAN CLARKE**, D. S. on the 25th day of March last & recorded this 25th day of July, 1787

R. ANDERSON, D. S.

[NATHAN BRIANT, NATHAN BRYAN, NATHAN BRIAN]

Deed, SC, Abbeville, Nathan Bryant, 1787

```
##### # # ##### ##### # # ##### ##### # #  
# # ## ## # # # ## # # # # # ## ##  
# # # # # # # # # # # # # # # # # # # # # #  
##### # # # # ##### ##### # # # # # # # #  
# # # # # # # # # # # # # # # # # # # # # #  
# # # # # # # # # # # # # # # # # # # # # #  
##### # # ##### ##### # # # # # # # # # # # #
```

Transcribed from original documents by Brent R. Brian & Martha M. Brian.

This document and others can be found on our website:

[BMGEN](#)

We claim **COPYLEFT** on the documents that we publish that are our original work.

COPYLEFT "rules" can be reviewed on the web site:

[GNU Free Documentation License](#)

In short, use what you like. But if you use our stuff, mention us as the source.

Brent R. Brian
Martha M. Brian
BrianMitchellGenealogy@gmail.com