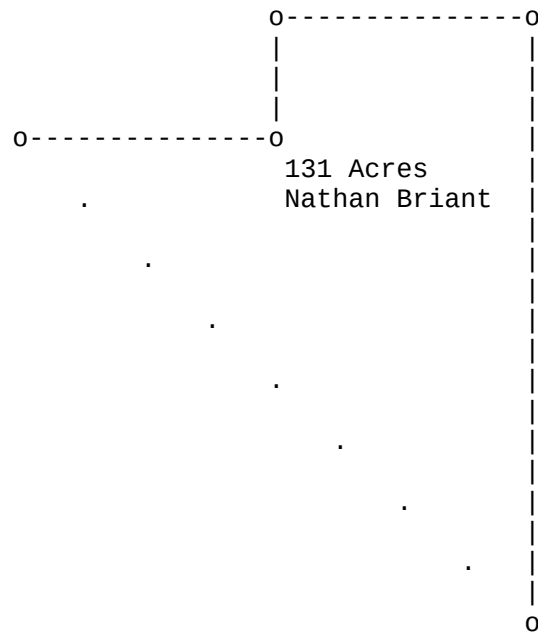


Deed, SC, Abbeville, Nathan Briant, 1787

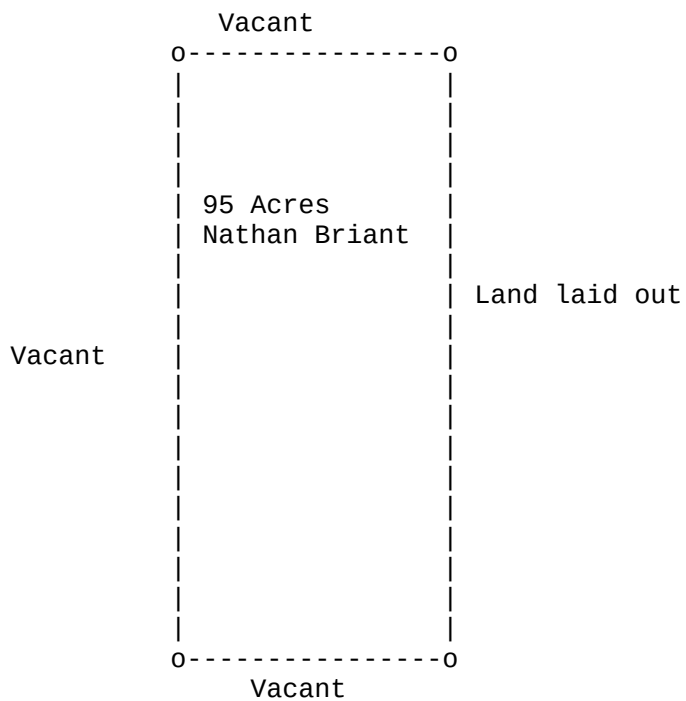


South Carolina

NATHAN BRIANT 131 Acres of land situate above the waters of Beaver Dam Creek, a branch of Rocky River. Surveyed by **JONATHAN CLARKE**, D. S., on the 26th day of March last and recorded this 16th Day of May 1787.

R. ANDERSON, C. S.

Deed, SC, Abbeville, Nathan Briant, 1787



NATHAN BRIANT 95 acres of land situate above the line on the Big Creek of Saluda River. Surveyed by **JONATHAN CLARKE**, D. S. on the 26th Day of March, last, and recorded this 16th day of May, 1787 By R. **ANDERSON**.

[NATHAN BRYANT, NATHAN BRYAN, NATHAN BRIAN]

Deed, SC, Abbeville, Nathan Briant, 1787

```
##### # # ##### ##### # # ##### ##### # #  
# # ## ## # # # ## # # # # # # ## ##  
# # # # # # # # # # # # # # # # # # # #  
##### # # # # ##### ##### # # # # # # # #  
# # # # # # # # # # # # # # # # # # # #  
# # # # # # # # # # # ## ### # # # # # # # #  
##### # # ##### ##### # # ### ##### ##### # #
```

Transcribed from original documents by Brent R. Brian & Martha M. Brian.

This document and others can be found on our website:

[BMGEN](#)

We claim **COPYLEFT** on the documents that we publish that are our original work.

COPYLEFT "rules" can be reviewed on the web site:

[GNU Free Documentation License](#)

In short, use what you like. But if you use our stuff, mention us as the source.

Brent R. Brian
Martha M. Brian
BrianMitchellGenealogy@gmail.com