

Deed, SC, Abbeville, James Martin, 1787

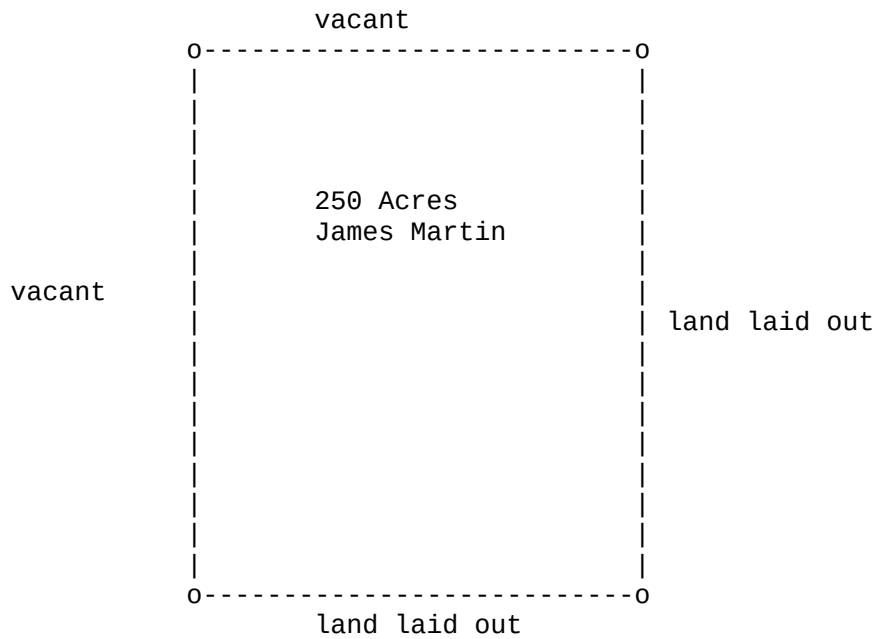


South Carolina

**JAMES MARTIN** 265 Acres of land situate above the line of a branch of Big Generostee called the Reedy Fork. Surveyed by **WILLIAM LESLY**, D. S. on the 9<sup>th</sup> day of February last and recorded this 11<sup>th</sup> day of May, 1787.

**R. ANDERSON**, C. S.

Deed, SC, Abbeville, James Martin, 1787

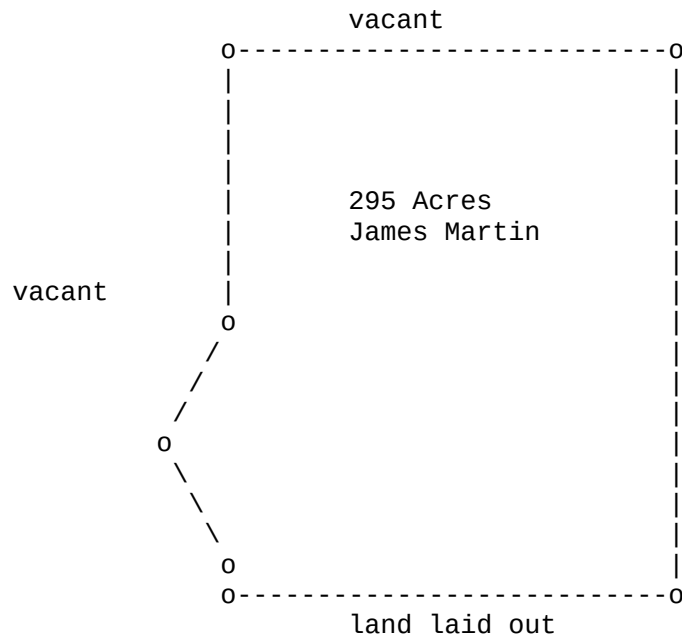


South Carolina

**JAMES MARTIN** 250 Acres of land situate above the line on a branch of Wilson's Creek, waters of Rocky Creek. Surveyed by **WILLIAM LESLY**, D. S. on the 20<sup>th</sup> day of February last and recorded this 11<sup>th</sup> day of May, 1787.

**R. ANDERSON**, C. S.

**Deed, SC, Abbeville, James Martin, 1787**



South Carolina

**JAMES MARTIN** 295 Acres of land situate above the line on a branch of Wilson's Creek, waters of Great Rocky Creek. Surveyed by **WILLIAM LESLY**, D. S. on the 20<sup>th</sup> day of February last and recorded this 11<sup>th</sup> of May 1787.

**R. ANDERSON**, C. S.

Deed, SC, Abbeville, James Martin, 1787

```
##### # # ##### ##### # # ##### ##### # #  
# # ## ## # # ## # # # # # # ## ##  
# # # # # # # # # # # # # # # # # # #  
##### # # # # ##### ##### # # # # # # # #  
# # # # # # # # # # # # # # # # # # #  
# # # # # # # # # # # # # # # # # # #  
##### # # ##### ##### # # # # # # # # # #
```

Transcribed from original documents by Brent R. Brian & Martha M. Brian.

This document and others can be found on our website:

[BMGEN](#)

We claim **COPYLEFT** on the documents that we publish that are our original work.

COPYLEFT "rules" can be reviewed on the web site:

[GNU Free Documentation License](#)

In short, use what you like. But if you use our stuff, mention us as the source.

Brent R. Brian  
Martha M. Brian  
[BrianMitchellGenealogy@gmail.com](mailto:BrianMitchellGenealogy@gmail.com)