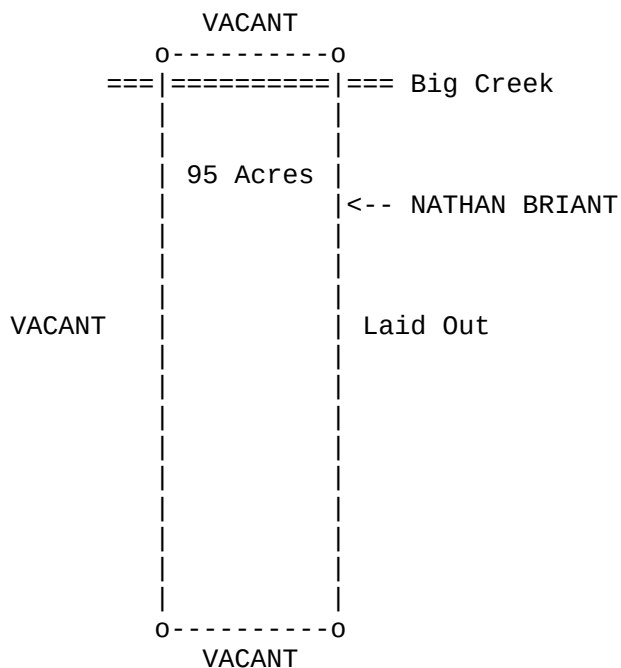


Land, SC, 96, Nathan Briant, 1789



South Carolina

I do hereby certify for **NATHAN BRIANT** a tract of land containing Ninety Five acres surveyed for him the 26<sup>th</sup> March 1787 situate in the district of Ninety Six on the Big Creek of Saluda River and hath such form, marks, buttings and boundings as the above plat represents.

Given under my hand this 16<sup>th</sup> February 1789

**JOHN BREMAR**, Surveyor General  
**JONATHAN CLARK**, Deputy Surveyor

Land, SC, 96, Nathan Briant, 1789

```
##### # # ##### ##### # # ##### ##### # #  
# # ## ## # # # ## # # # # # ## ##  
# # # # # # # # # # # # # # # # # # # #  
##### # # # # ##### ##### # # # # # # # #  
# # # # # # # # # # # # # # # # # # # #  
# # # # # # # # # # # ## ### # # # # # # #  
##### # # ##### ##### # # ### ##### ##### # #
```

Transcribed from original documents by Brent R. Brian & Martha M. Brian.

This document and others can be found on our website:

[BMGEN](#)

We claim **COPYLEFT** on the documents that we publish that are our original work.

COPYLEFT "rules" can be reviewed on the web site:

[GNU Free Documentation License](#)

In short, use what you like. But if you use our stuff, mention us as the source.

Brent R. Brian  
Martha M. Brian  
[BrianMitchellGenealogy@gmail.com](mailto:BrianMitchellGenealogy@gmail.com)