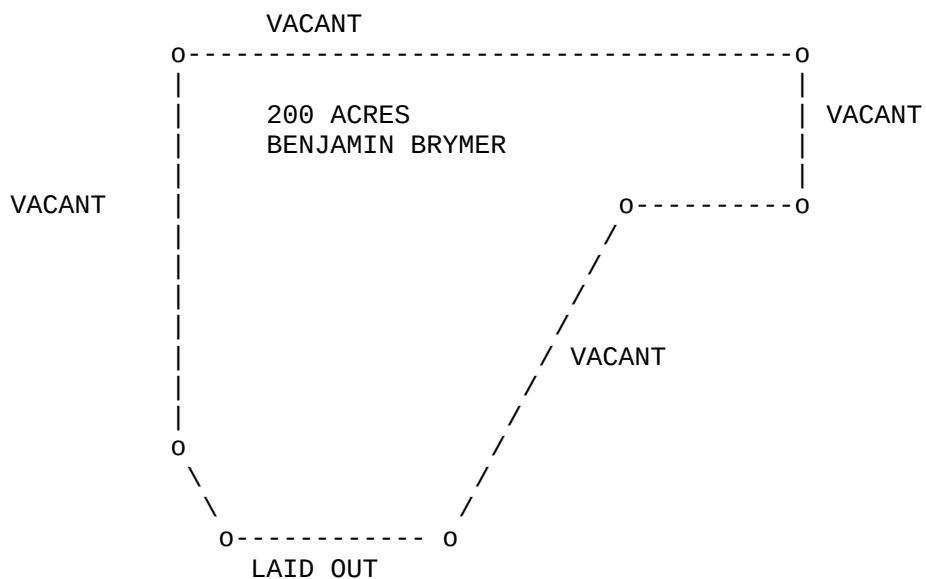


Deed, SC, 96, Benjamin Brimer, 1768



South Carolina

I have cause to be admeasured and laid out unto **BENJAMIN BRIMER** a tract of land containing two hundred acres situate in the district of Ninety Six on a branch of Mountain Creek on the waters of Big Generostee and hath such form and marks, buttings and boundings as the above plat represents.

**WILLIAM LESLY, DS**

Certified for the 2<sup>nd</sup> day of August, 1786

**EPHRAIM MITCHELL, SG**

**Deed, SC, 96, Benjamin Brimer, 1768**

plot points

=====

s80e 15c

n48e 40c

e 30c

n 19c

w 66.5c

s10w 44c

Deed, SC, 96, Benjamin Brimer, 1768

```
##### # # ##### ##### # # ##### ##### # #  
# # ## ## # # # ## # # # # # ## ##  
# # # # # # # # # # # # # # # # # # # #  
##### # # # # ##### ##### # # # # # # # #  
# # # # # # # # # # # # # # # # # # # #  
# # # # # # # # # # # ## ### # # # # # # # #  
##### # # ##### ##### # # ### ##### ##### # #
```

Transcribed from original documents by Brent R. Brian & Martha M. Brian.

This document and others can be found on our website:

[BMGEN](#)

We claim **COPYLEFT** on the documents that we publish that are our original work.

COPYLEFT "rules" can be reviewed on the web site:

[GNU Free Documentation License](#)

In short, use what you like. But if you use our stuff, mention us as the source.

Brent R. Brian  
Martha M. Brian  
[BrianMitchellGenealogy@gmail.com](mailto:BrianMitchellGenealogy@gmail.com)